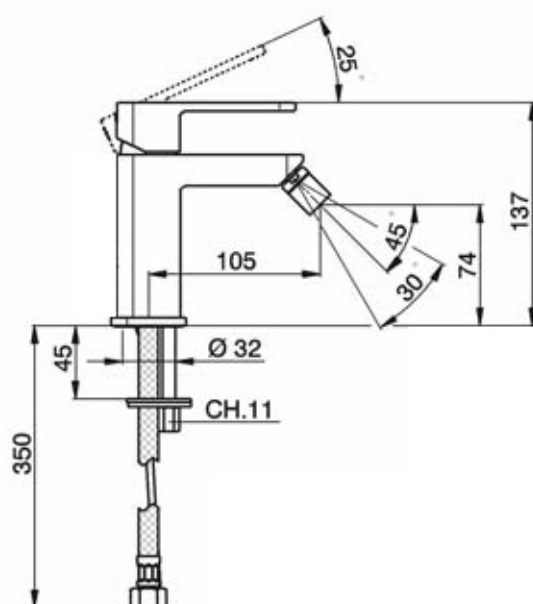
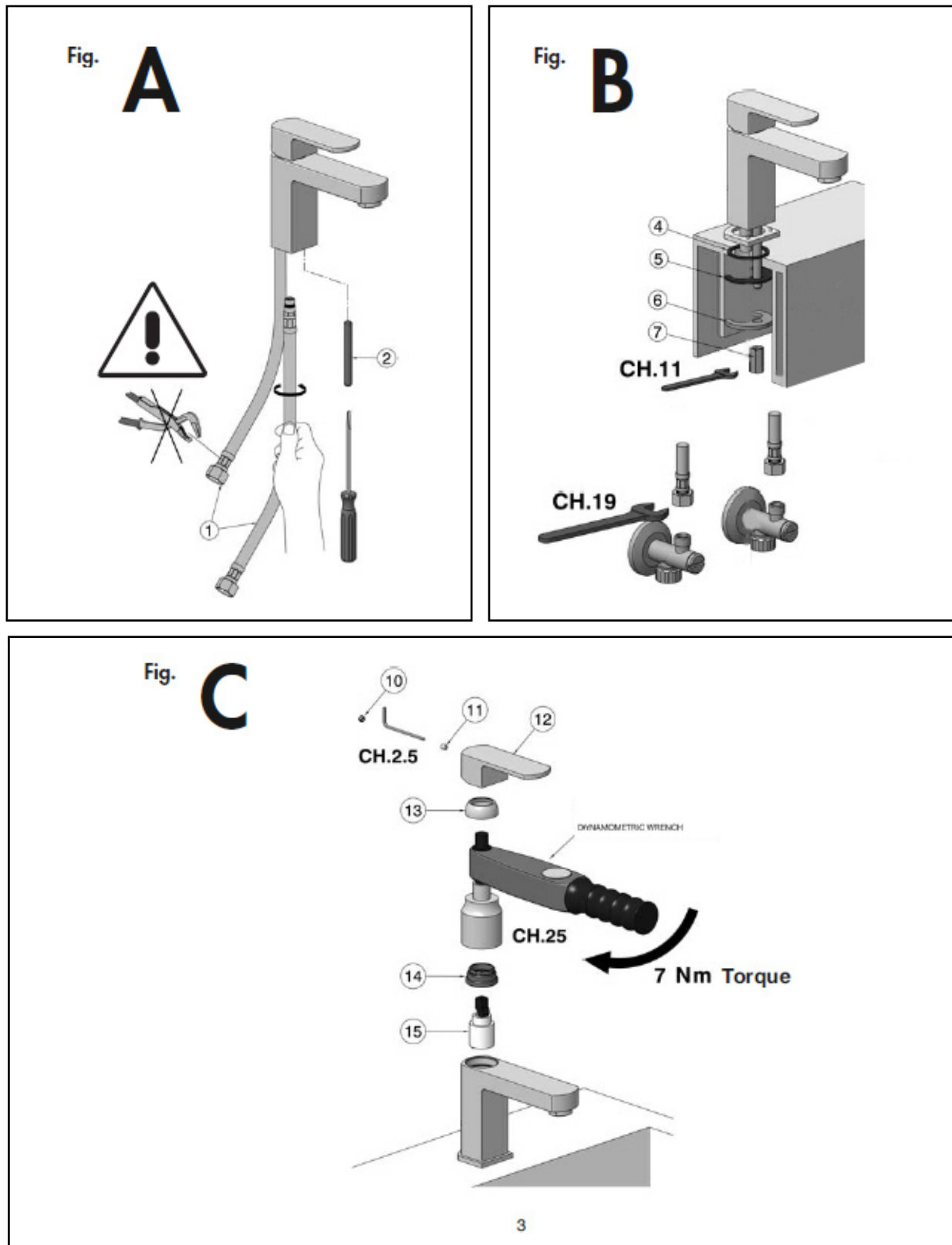


# CUDO

## Mono bidet mixer





**HOT WATER SUPPLY**

These mixers are suitable for operating with hot water cylinders under pressure, as well as with electric and gas instantaneous heaters.

**ATTENTION:** the connection with water heaters without pressure (with open circuit) is NOT possible.

**INSTALLATION** (ref. A and B)

Before and after the installation, clean the pipes.

Screw the flexible hoses (1) to the mixer; avoiding to tighten them too much.

**IMPORTANT:** during hoses assembly operations ABSOLUTELY NEVER TAKE GRIP of the bushes of hoses with Allen wrenches or adjustable pliers, that may damage them and would therefore prevent the safety of the installation.

- Screw the fastening rod (2).
- Fix the mixer to the basin (maximum thickness: 45 mm)
- (4) Upper rubber seal gasket
- (5) Lower Shaped rubber seal gasket
- (6) Fastening metal plate
- (7) Hexagonal nut wrench 11 mm.
- Connect the mixer to pipeworks, by screwing the G3/8" nuts of the flexible hoses with a 19 mm wrench.
- Open the water supplies and check the tightness of all connections and the correct operation of the mixer.

**OPERATING CONDITIONS**

- Minimum dynamic pressure ..... 0,5 bar
- Maximum operational pressure (static)..... 10 bar
- Recommended operational pressure (static)..... 1-5 bar  
(ATTENTION: for pressures exceeding 5 bar, we recommend the installation of a pressure reducer)
- Maximum test pressure (static)..... 16 bar
- Maximum hot water temperature..... 80 °C
- Recommended hot water temperature ..... 60 °C  
(for safety and energy saving)

**REPLACEMENT OF THE MIXING CARTRIDGE**

(ref. Fig. C)

- Shut off the hot water and cold water supplies.
- Remove the hole-cover (10) and unscrew the locking screw using a hexagonal wrench of 2,5 mm
- Remove the handle (12) and the cover (13).
- Unscrew the nut (14) with a 25 mm wrench and remove the mixing cartridge (15).
- Fit the new mixing cartridge, by checking that no dirt is left between the plane surface and the gaskets.
- Screw the nut (14) by a **DYNAMOMETRIC WRENCH, by applying a screwing torque of 7 Nm.**
- Screw the cover and reassemble the handle.