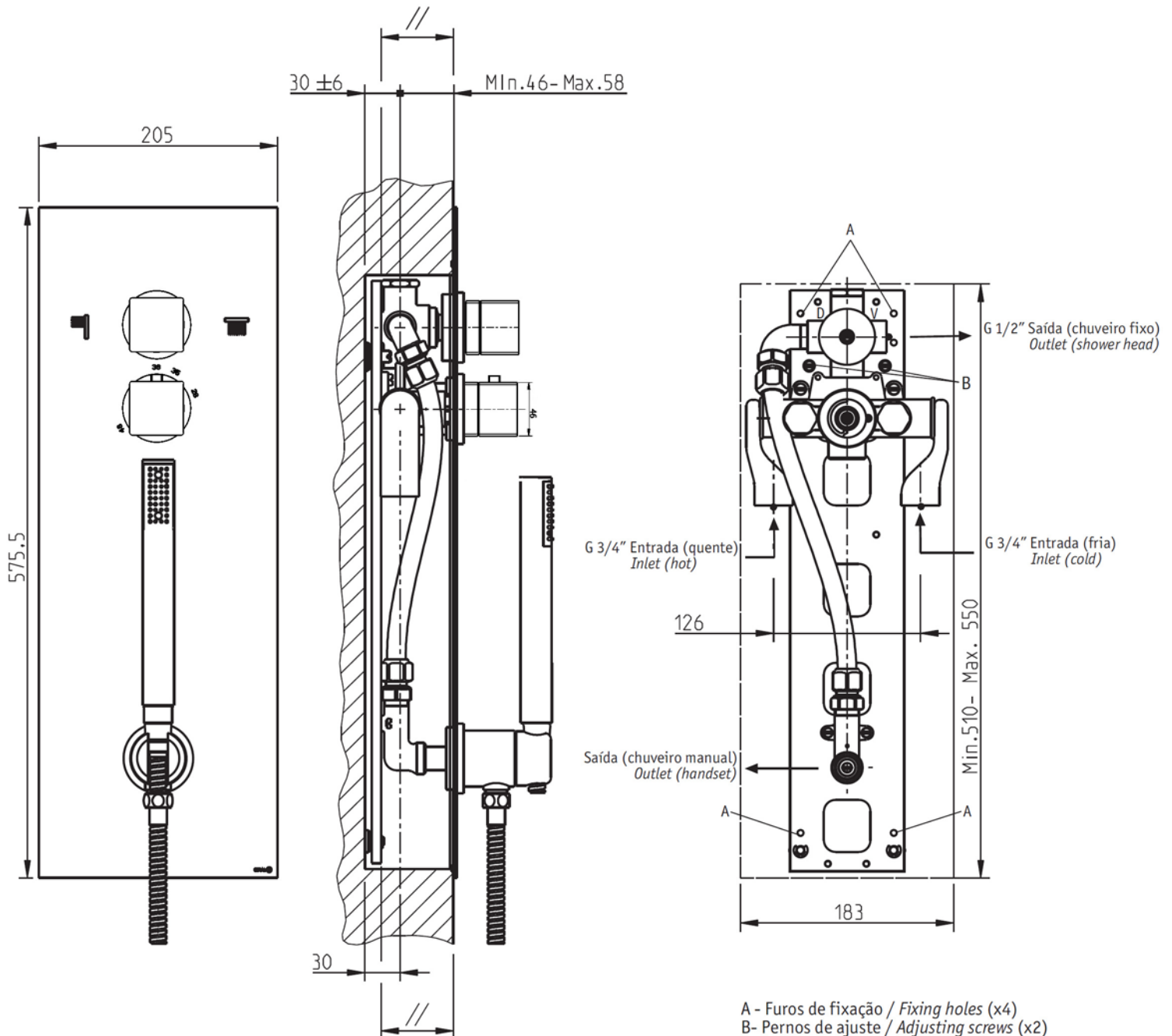


QUADRADO

2 control thermostatic shower system



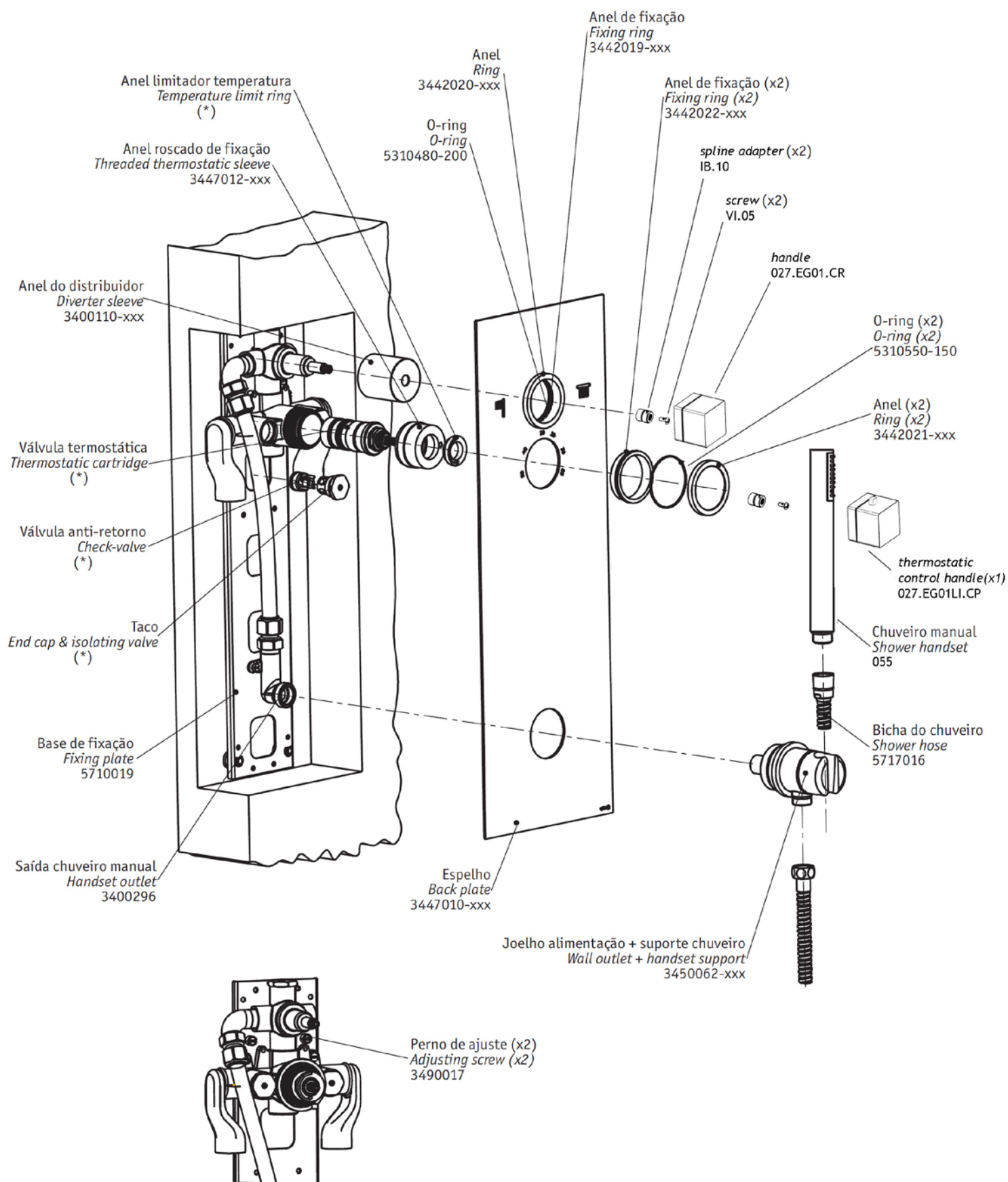
A - Furos de fixação / Fixing holes (x4)
B - Pernos de ajuste / Adjusting screws (x2)

Nota/Note: A alimentação de água fria e quente, tem de ser localizada na metade inferior da caixa de alojamento do conjunto.
The cold and hot water inlet, must be located on inferior middle of the housing set box.

CIFIAL

www.cifial.co.uk
cifialuk@btconnect.com

dimensions mm



CIFIAL

www.cifial.co.uk
cifialuk@btconnect.com

Notas/Notes: 1) xxx indica o código de acabamento. / xxx represent different finishes.

2) (*) Conjunto pré-montado de fábrica - 5711018. / (*) Kit 5711018 pre-assembled at factory.

0000000000