

CIFIAL

1966072

Introduction

Chromotherapy programs

Method of use

Maintenance and cleaning

Introduction to chromotherapy

Chromo therapy practices were already well known in ancient times.

According to Egyptian mythology, the Gods discovered chromotherapy, whereas according to the secrets of hermetism, both the Egyptians and Greeks employed minerals, stones, crystals and coloured balms, besides painting the wall of therapeutic rooms.

The Greeks associated the colours with the fundamental elements (air, fire, water and earth) and these were in turn associated with the “humeral” or “body fluids”: yellow for bile, red for blood, white for phlegm, and the black bile, that are produced in the four specific organs: splinter, heart, liver and brain.

Health was considered the result of these elements’ equilibrium, whereas sickness was its unbalance. The correlation of colours with humours was also echoed in their

use for treating illnesses.

Eastern medicine also has traditionally taken into account how colours influence the equilibrium of chakras, the centres of energy streams related to the major glands in the body.

It is quite straightforward to integrate chromotherapy into other therapies and treatments, thus enhancing their outcome and beneficial effects.

For this reason, chromotherapy is often coupled with other fitness activities such as massage and thermal baths.

This shower-head has been designed with this aim in mind, coupling the shower efficacy to a genuine chromotherapy session.

Using its entire and diversified program of exposure to a specific colour range, you can enjoy the benefits and relaxation of chromotherapy, daily and at home.

The benefits of colour in the shower head

WHITE:	Revitalizing, increases vitality and energy
CYAN:	Soothing, it releases tension and restores freshness
MAUVE:	Relaxing, helps with insomnia and the nervous system
BLUE:	Purifying, against stress and anxiety
GREEN:	Relaxing, favours contemplation and calmness
YELLOW:	Stimulating, favours concentration and self assurance
ORANGE:	Freeing, it confers optimism and releases tension
RED:	Stimulating, exciting, against depression and immune-deficiency
MAGENTA:	Energetic, it confers strength and character

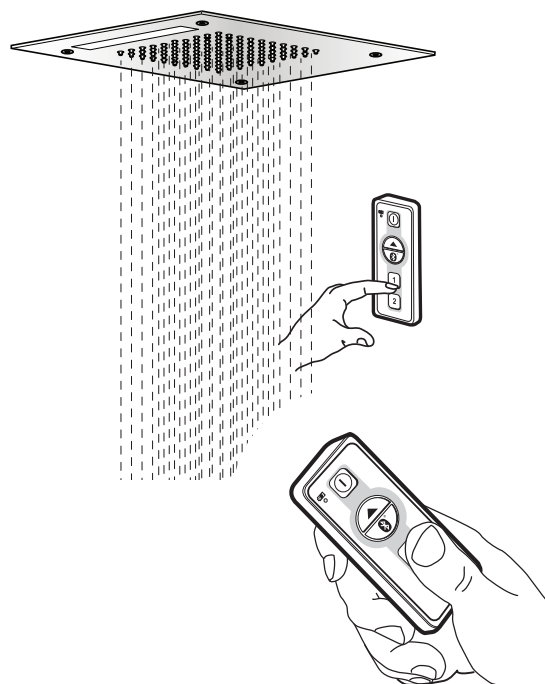
Programs for the shower head

Programma 1 Relaxing Total 12 min	Individual Colors:	White	Total 10 min
		Cyan	Total 10 min
		Mauve	Total 10 min
		Blue	Total 10 min
		Green	Total 10 min
Programma 2 Exciting Total 12 min		Yellow	Total 10 min
		Orange	Total 10 min
		Red	Total 10 min
		Magenta	Total 10 min

Technical information

The device you have installed is equipped with a remote control with an extremely low emission. The remote control can be installed into the shower cabin.

Remote control and showerhead are already associated to each other on purchase. In order to associate the showerhead to a new remote control, i.e. in case of replacement, please follow the instructions at the end of this guide.



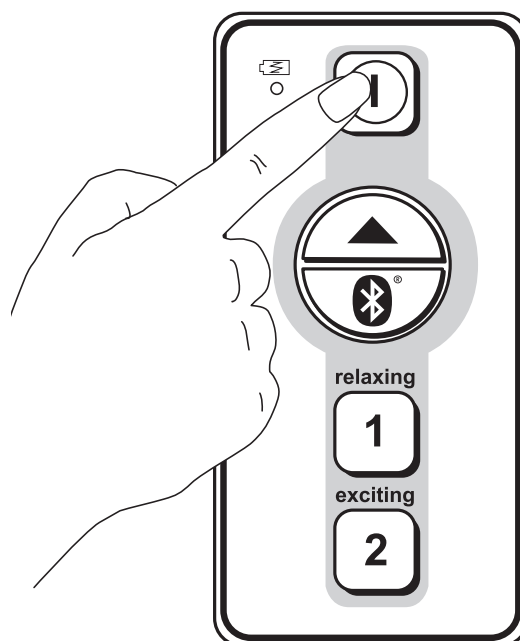
Note: a remote control can be associated to several showerheads to control them at the same time. It is not possible, on the contrary, to control a single showerhead with several remote controls.

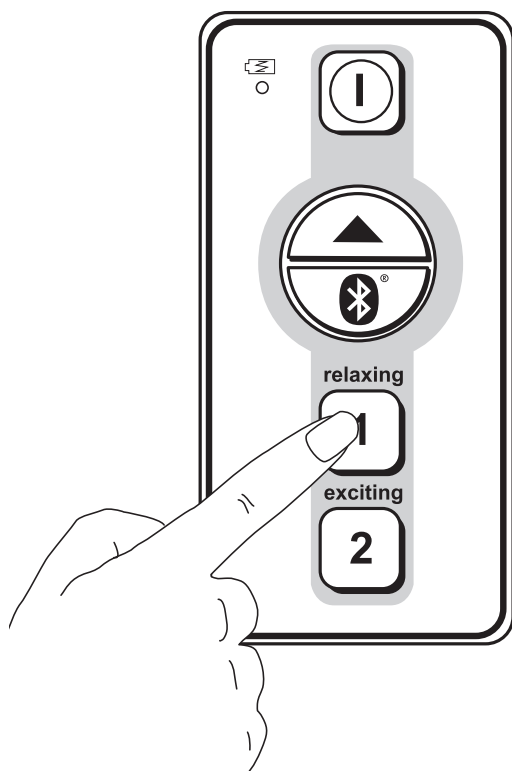
Remote control instructions for use

- Press the key as shown to switch the remote control on.

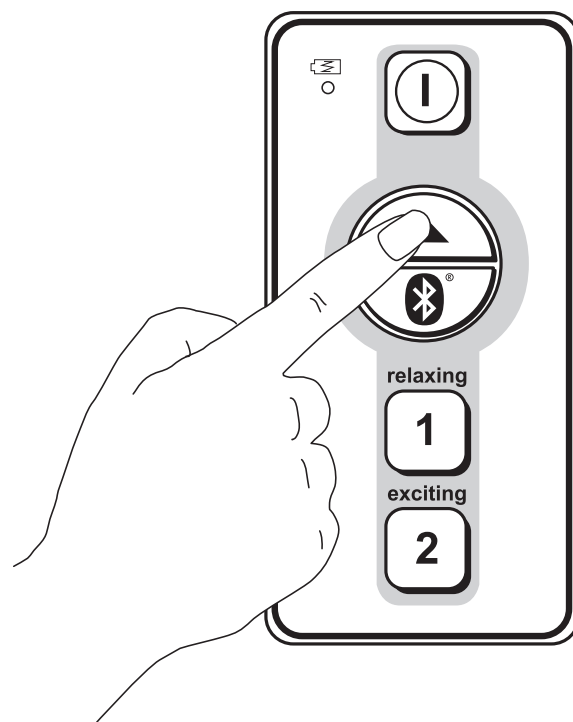
The remote control is designed according to power-savings guidelines; it switches itself off automatically after 10 seconds non-use; in order to start it again, touch the key again.

In case you want to switch it off manually, touch the key as shown for longer than 2 seconds.





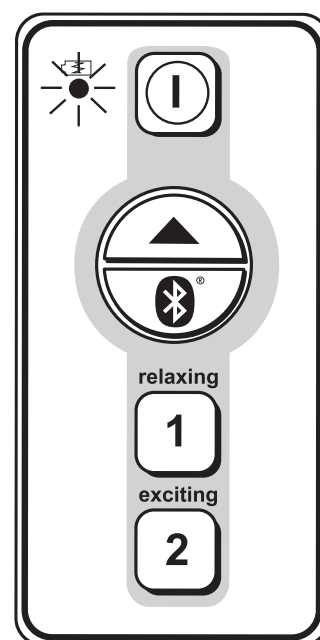
- Set the number of your selected program using the keys as indicated.



- Set your color program, using the keys as indicated.



- To end the cycle at any time, press the key as shown for more than 2 seconds.



- The remote control is powered by 2, **AAA 1,5V** alkaline batteries. When a red light appears on the keyboard you should replace the batteries.

Bluetooth Audio system



Bluetooth is worldwide a registered trademark of Bluetooth SIG, Inc.

- Press the ON key on the remote control to leave the energy-saving mode.
- To switch on the Bluetooth mode of the shower head, please press the key indicated and wait for the voice message HELLO.
- Activate Bluetooth mode on your own device (Smartphone, tablet, etc.) referring to the device user's manual.
- Select SHOWER SOUND SYSTEM from the list of Bluetooth connections available from your device.
- Please wait for the voice message YOUR DEVICE IS CONNECTED. This confirms that the device has been successfully connected.
- The music you wish to listen to will be played via your own device.

NOTE:

Should no device be connected within 60 seconds, the Bluetooth system of the shower head will switch off automatically and the above procedure must be repeated.

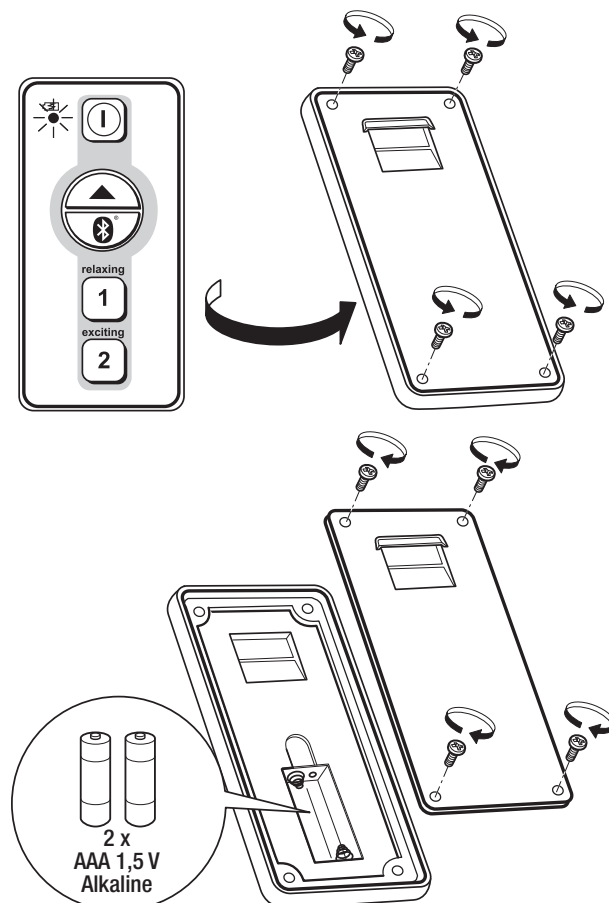
- When the sound system of the shower head is disconnected from your device, a closing salutation will be heard (GOODBYE)
- Please repeat the above procedure for a new connection.

Please note that the Bluetooth audio system works only as an audio signal receiver and can not be used as a speakerphone.

If there are obstacles between the devices, the operating distance might be reduced.

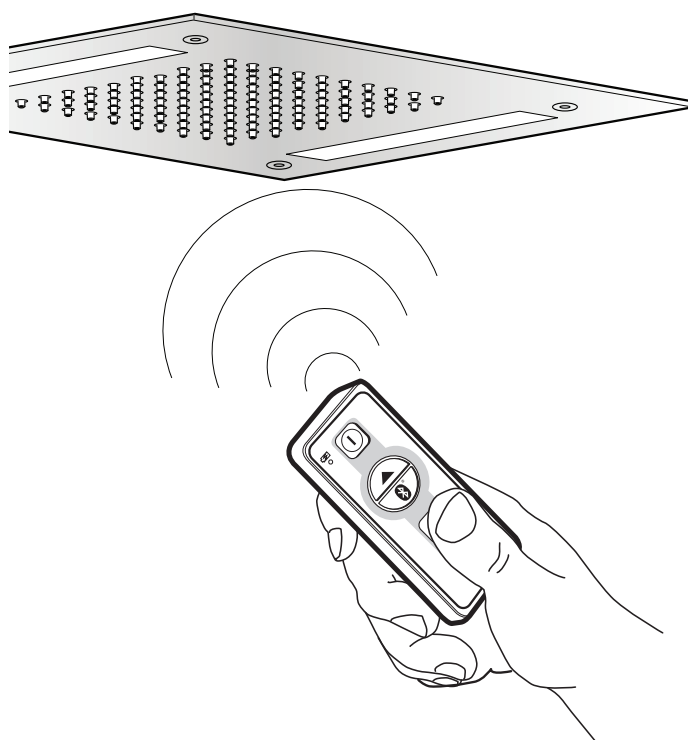


- Place the batteries ensuring their appropriate negative/positive poles position as shown by the diagram in their casing.
- When the device is not going to be used for a long time, remove all batteries.



Procedure for associating showerhead to remote control

- Switch off electric power to the showerhead.
- Give power to the showerhead.
- During the first 5 seconds, when the showerhead is RED coloured, switch on the remote control you want to connect.
- The sequence of RED-GREEN-BLUE colours will confirm the successful programming. On the contrary, please repeat the procedure from the beginning.



Maintenance and cleaning

- Replacement of damaged electrical wires and of spare parts must only be carried out by specialized personnel. The manufacturer is not responsible if the above clause is not respected.

Quality, technological processes and materials are the characteristics that define the high standards of our accessories.

However, to prevent damage to surfaces, we recommend to clean all parts only with water and soap, and dry the same with a soft cloth.

Avoid using rough fabrics, abrasive products, acid detergents, ammonia, caustic soda, bleach and solvents.

In case of contact with one of the above mentioned substances, rinse and dry the surface and keep in mind that even ammonia, muriatic acid etc. vapours might corrode. For stainless steel surfaces, use specific products, alcohol or detergent, providing they are not acid-based.

Disposal of electrical and electronic equipment (RAEE) within the European Union.



This symbol appears on the product or on the package to indicate that the product is subject to differential disposal requirements.

Users must dispose of waste equipment bringing them to the collection point as appropriately indicated for the recycling of electrical and electronic equipment.

Differential collection and recycling of waste equipment favour natural resources preservation and guarantee that such equipment is disposed of preserving the environment and health.

For further information on the waste collection points, please contact the manufacturer and/or reseller where you bought the device from.